



LIFTING & SAFETY
PRODUCT LINE

INDUSTRIAL PRODUCTS FOR LIFE | STARKEAMERICA.COM

ELECTRIC CHAIN HOISTS



STK SERIES

- Single Speed (26 FPM Lift)
- Up to 5 Ton Capacity
- Up to 20' Lift Height (Longer Lifts Available Upon Request)
- 230 V/460 V/3 Ph/60Hz



VS SERIES

- Variable Speed (Up to 26 FPM Lift)
- Up to 3 Ton Capacity
- Up to 20' Lift Height (Longer Lifts Available Upon Request)
- 230 V/460 V/3 Ph/60Hz
- 230 V Single Phase Options Available

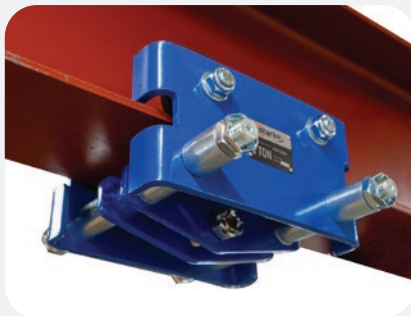


BLITZ SERIES

- Two Speed (Up to 85/25 FPM Lift)
- Up to 1,000 lbs Capacity
- Up to 20' Lift Height (Longer Lifts Available Upon Request)
- 230 V/460 V/3 Ph/60Hz
- 230 V Single Phase Options Available

TROLLEYS

PLAIN



- ½ Ton – 2 Ton Capacities
- Fits up to 9" beams
- Lug or Hook Attachment

MOTORIZED



- 1 Ton – 5 Ton Capacities
- 27 – 82 FPM Travel Speeds
- Fits up to 10 7/8" Beams
- 230 V Single Phase Options Available

BEAM TRACTOR DRIVE



- Up to 3 Ton Capacity
- 27 – 82 FPM Travel Speeds
- Fits up to 8" Beams
- 230 V Single Phase Options Available

WIRE ROPE HOISTS



SMW SERIES

MONORAIL

- Up to 15 Ton Capacity
- Two Speed (Up to 24/4 FPM Lift)
- 20', 30', & 40' Lift Height Options
- High Volume Handling (H4 Rated)
- 2 Speed Trolley Travel (Up to 75/20 FPM)
- 230 V/460 V/3 Ph/60Hz



STW SERIES

TOP-RUNNING

- Up to 20 Ton Capacity
- Two Speed (Up to 24/4 FPM Lift)
- 20', 30', & 40' Lift Height Options
- High Volume Handling (H4 Rated)
- 2 Speed Trolley Travel (Up to 75/20 FPM)
- 230 V/460 V/3 Ph/60Hz

SLINGS



CHAIN SLING

- Grade 80 and Grade 100
- 5/16" or 3/8" Thickness
- Up to 20' Lengths
- 1 – 4 Leg Options
- Adjuster Grab Hooks Available
- Sling or Grab Hook Options

WEB SLING



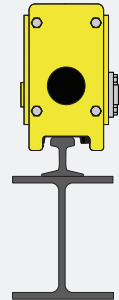
- 2 Ply
- 1", 2", and 3" Widths

FOR SPECS & DETAILS: STARKEAMERICA.COM

CRANE KITS

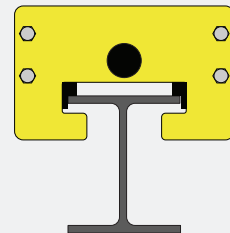
TOP-RUNNING

- 2 Ton – 15 Ton Capacities
- 20' – 128' Bridge Spans
- Choose from STK Series, STK VS Series, or SMW Series
- Festoon or Remote Control Packages Available



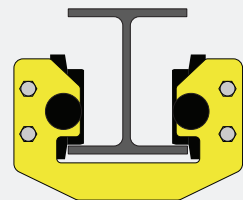
TOP RUNNER

- 1 Ton – 3 Ton Capacities
- 20' – 64' Bridge Spans
- STK Series
- Festoon or Remote Control Packages Available



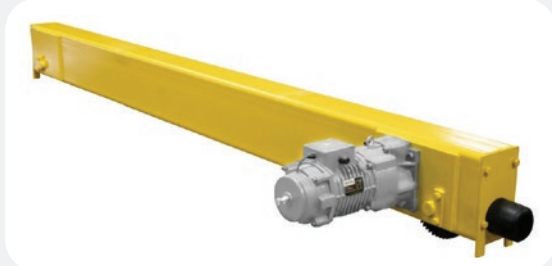
UNDER-RUNNING

- 1 Ton – 10 Ton Capacities
- 20' – 80' Bridge Spans
- Choose from STK Series or SMW Series
- Festoon or Remote Control Packages Available



END TRUCKS

MOTORIZED



- Available as Top-Running or Under-Running
- Up to 200 FPM Travel Speed
- Up to 15 Ton Capacity

MANUAL



- Available as Under-Running
- Up to 3 Ton Capacity

ELECTRIFICATION & BRIDGE PANELS



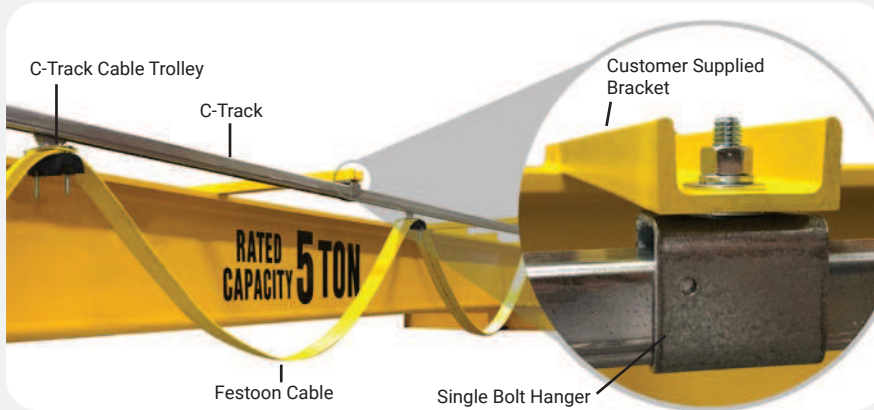
ELECTROTRACK

- Pre-packaged Kits Up to 156'
- 4 Conductor
- 65 or 120 Amps
- 0°F – 155°F Environment



FLEXTRACK

- Custom designed and produced for complex loop monorail systems
- 4 Conductor
- 65 Amps
- 0°F – 155°F Environment



FESTOON SYSTEM

- Complete packages includes trolleys, track, cable, brackets, and hangers.
- Custom lengths up to 100'
- 4, 8, and 12 conductor in 14 AWG or 4 conductor in 10 AWG
- Easy to install

BRIDGE CONTROL PANELS

- Comes with VFD for smooth crane operation
- Easy to Troubleshoot Wiring Layout
- Through the door power disconnect



SAFETY

SAFETY HARNESSSES

- 420 lbs Weight Capacity
- Sizes Available Up To 3XL
- Comfort Padding
- *Basic One-Size-Fits-All Harness Available*



SELF-RETRACTING LANYARDS

- Up to 50' Length
- Lightweight & Compact



SHOCK ABSORBING LANYARDS

- Up to 50' Length
- Lightweight & Compact



FALL ARREST TROLLEYS

- Available in Steel or Aluminum
- 310 lbs Capacity per ANSI
- 420 lbs Capacity per OSHA
- 1,800 lbs Max Arresting Force
- Fits up to 8.75" Beams



SECONDARY BRAKE DEVICES

- Backup Brake Device When Primary Lifting Mechanism Fails
- 2,204 lbs and 3,527 lbs Capacities

FOR SPECS & DETAILS: STARKEAMERICA.COM